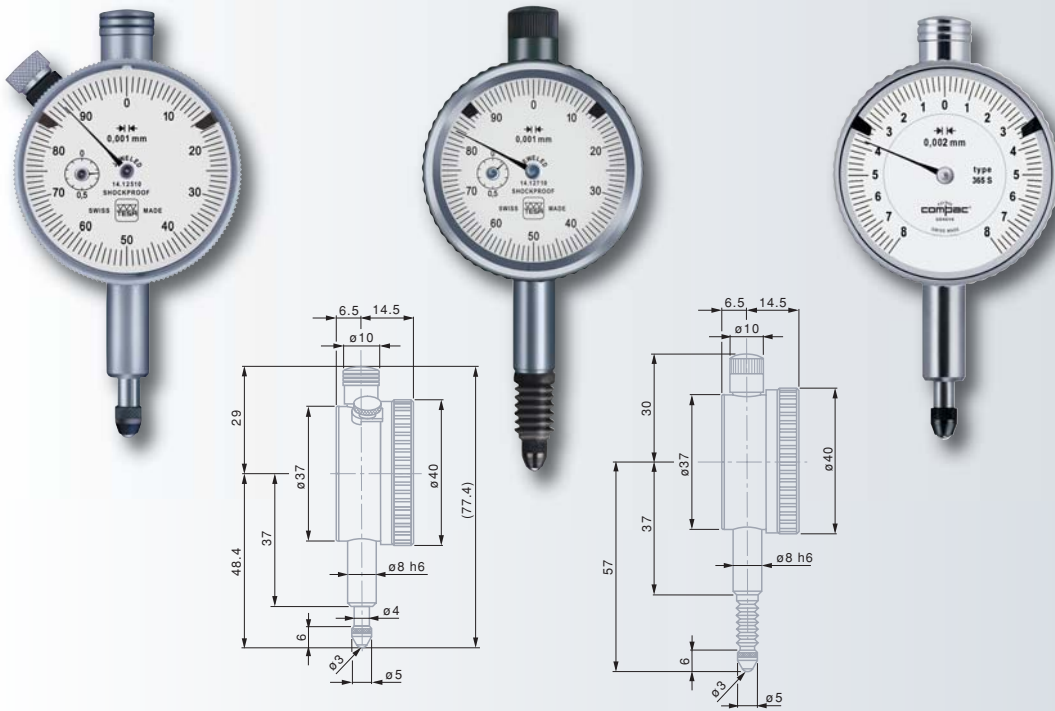


TESA YE and COMPAC Dial Gauges – Standard 40 mm dial diameter, 0,001 or 0,002 mm reading



- ✓
- EN ISO 463
Factory standard
- 0,001 mm
0,002 mm
- 1,1 mm
- Rotating dial
- Full-metal case housing.
Fixing shank and plunger in hardened stainless steel.
- Adjustable tolerance markers
Measuring insert with a M2,5 thread.
- 3 mm dia.
ball tip, already mounted
- Cardboard box
- Identification number
- Inspection report with a declaration of conformity

Standard line								
355		0,002	3	3,3	●	–	0,2	0 ÷ 10 ÷ 20
01412510		0,001	1	1,5	●	●	0,1	0 ÷ 50 ÷ 100
367		0,001	1	1,5	●	–	0,1	0 ÷ 5 ÷ 10
Standard line IP54 protected against the penetration of liquids								
355E		0,002	3	3,3	●	–	0,2	0 ÷ 10 ÷ 20
01412710		0,001	1	1,5	●	–	0,1	0 ÷ 50 ÷ 100
367E		0,001	1	1,5	●	–	0,1	0 ÷ 5 ÷ 10
Standard line with restricted reading range								
365S		0,002	±0,08	1,5	●	–	0,2	8 ÷ 0 ÷ 8
367S		0,001	±0,04	1,5	●	–	0,1	4 ÷ 0 ÷ 4

Permissible limits of a metrological characteristic (MPE/MPL)

	3 mm	1 mm	±0,08/±0,04 mm
Deviation span	10 µm	4 µm	2 µm
Deviation span within the local measuring span 0,10 mm	6 µm	4 µm	2 µm
Total deviation span	12 µm	5 µm	4 µm
	1,5 µm	1 µm	1 µm
Repeatability limit	1,5 µm	1 µm	1 µm
	2 µm	1 µm	1 µm
Max. hysteresis	2 µm	1 µm	1 µm
	Standard line	Standard line	Standard line
Measuring force	≤ 1,4 N	≤ 1,4 N	≤ 1,4 N
	Standard line IP54	Standard line IP54	Standard line IP54
	≤ 1,7 N	≤ 1,7 N	≤ 1,7 N

MERCER and COMPAC Dial Gauges – Standard
58 mm dial diameter, 0,1 mm reading



EN ISO 463
Factory standard

0,1 mm

1,5 mm

Rotating dial

Full-metal case housing.
Fixing shank and plunger in hardened stainless steel.

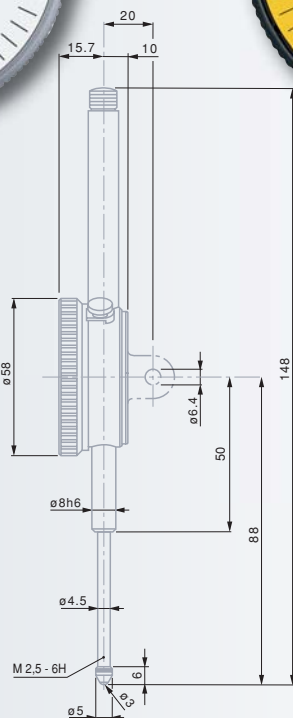
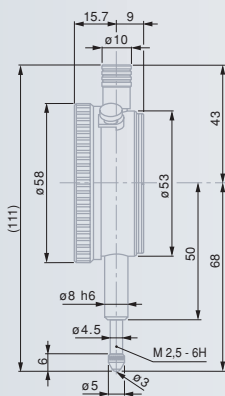
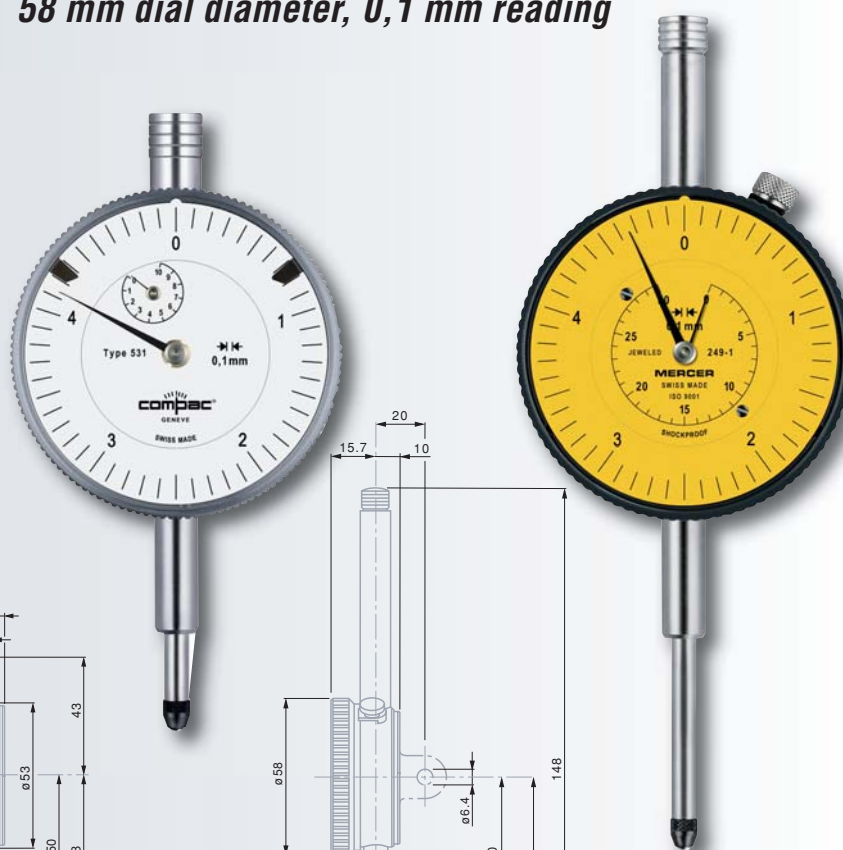
Adjustable tolerance markers
Measuring insert with a M2,5 thread.

3 mm dia. ball tip, already mounted.

Cardboard box

Identification number

Inspection report with a declaration of conformity



mm

mm

mm

mm

Standard line

531		0,1	10	10,5	●	–	5	0 ÷ 2,5 ÷ 5
531B		0,1	10	10,5	●	–	5	0 ÷ 2,5 ÷ 5
01416038	249-1	0,1	30	30,5	●	●	5	0 ÷ 5

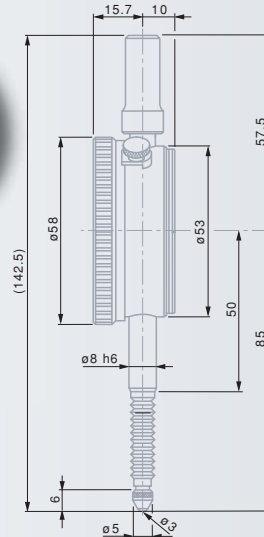
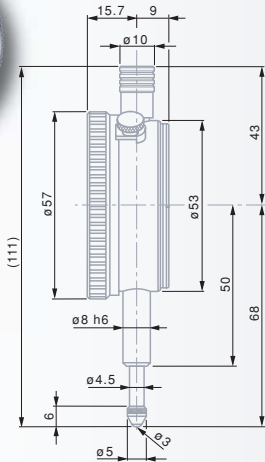
Permissible limits of a metrological characteristic (MPE/MPL)

	10 mm	30 mm
Deviation span	30 µm	30 µm
Total deviation span	35 µm	40 µm
Repeatability limit	5 µm	10 µm
Max. hysteresis	10 µm	10 µm
Measuring force	≤ 1,5 N	≤ 2,2 N



TESA YE, MERCER and COMPAC Dial Gauges – Standard

58 mm dial diameter, 0,01 mm reading



EN ISO 463
Factory standard



0,01 mm



1,5 mm



Rotating dial



Full-metal case housing. Fixing shank and plunger in hardened stainless steel



Adjustable tolerance markers. Measuring insert with a M2,5 thread.



3 mm dia. ball tip, already mounted.



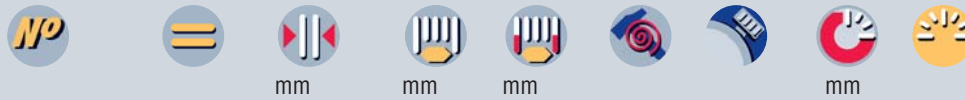
Cardboard box



Identification number



Inspection report with a declaration of conformity



Standard line

01412011		0,01	10	10,5	●	–	1	0 ÷ 50 ÷ 100
01412310		0,01	10	10,5	–	–	1	0 ÷ 50 ÷ 100
01416020	250-1	0,01	10	10,5	–	●	1	0 ÷ 50 ÷ 0
01416021	251-1	0,01	10	10,5	–	●	1	0 ÷ 50 ÷ 100
512K	JET	0,01	10	10,5	–	–	1	0 ÷ 50 ÷ 100
532		0,01	10	10,5	●	–	1	0 ÷ 50 ÷ 100

Standard line IP54 protected against the penetration of liquids

01412411		0,01	10	10,5	–	–	1	0 ÷ 50 ÷ 100
532E		0,01	10	10,5	●	–	1	0 ÷ 50 ÷ 100

Standard line with restricted reading range

01412211		0,01	±0,4	4	●	–	1,27	40 ÷ 0 ÷ 40
01416032		0,01	±0,4	4	●	–	1,27	40 ÷ 0 ÷ 40
532S		0,01	±0,4	4	●	●	1,27	40 ÷ 0 ÷ 40
533S		0,01	±0,5	4	●	–	1,27	50 ÷ 0 ÷ 50

Permissible limits of a metrological characteristic (MPE/MPL)

		10 mm	±0,4/±0,5 mm
	Deviation span	15 µm	7 µm
	Deviation span within the local measuring span 0,10 mm	8 µm	5 µm
	Total deviation span	17 µm	9 µm
	Repeatability limit	3 µm	3 µm
	Max. hysteresis	3 µm	3 µm
	Measuring force	Standard line	≤ 1,5 N
		Standard line IP54	≤ 2,2 N

MERCER and COMPAC Dial Gauges – Standard
58 mm dial diameter, 0,002 mm reading



EN ISO 463
Factory standard

0,002 mm

1,5 mm

Rotating dial

Full-metal case housing.
Fixing shank and plunger in hardened stainless steel.

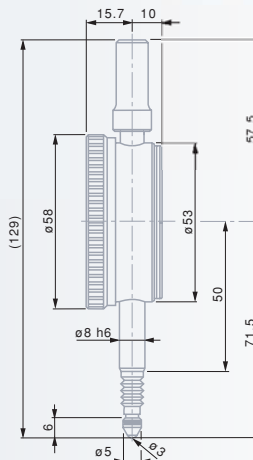
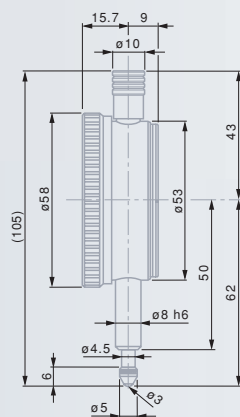
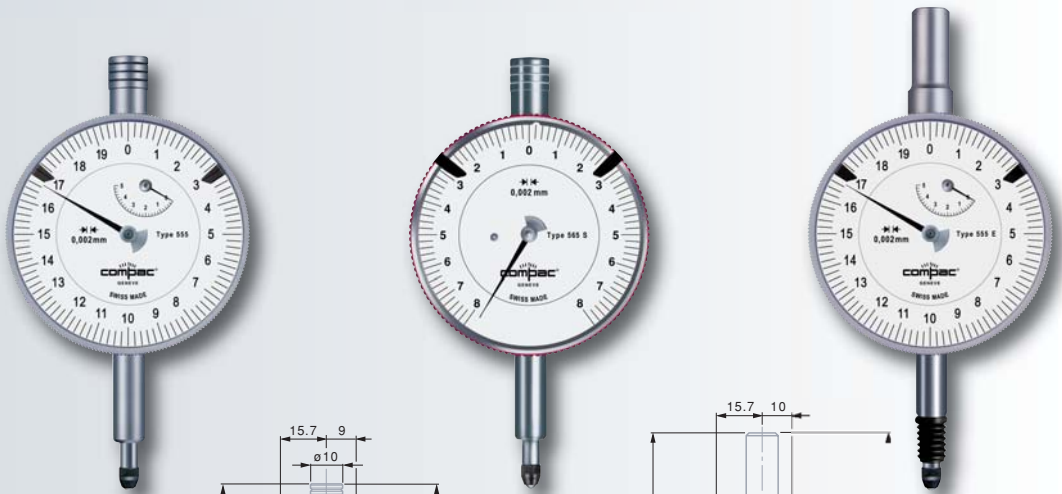
Adjustable tolerance markers
Measuring insert with M2,5 thread.

3 mm dia. ball tip, already mounted.

Cardboard box

Identification number

Inspection report with a declaration of conformity



Standard line

01416034	253-1	0,002	5	5,3	–	●	0,2	0 ÷ 10 ÷ 0
01416035	254-1	0,002	5	5,3	–	●	0,2	0 ÷ 10 ÷ 20
555		0,002	5	5,3	●	–	0,2	0 ÷ 10 ÷ 20

Standard line IP54 protected against the penetration of liquids

555E		0,002	5	5,3	●	–	0,2	0 ÷ 10 ÷ 20
-------------	--	-------	---	-----	---	---	-----	-------------

Standard line with restricted reading range

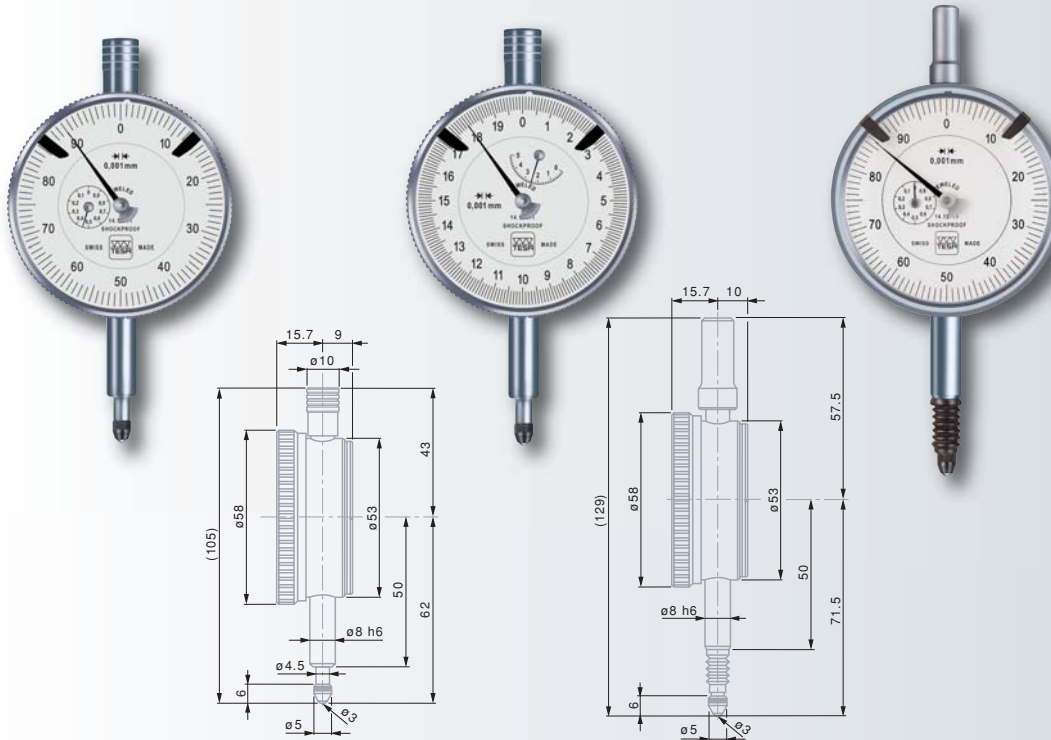
565S		0,002	±0,08	3,3	●	–	0,2	8 ÷ 0 ÷ 8
-------------	--	-------	-------	-----	---	---	-----	-----------

Permissible limits of a metrological characteristic (MPE/MPL)

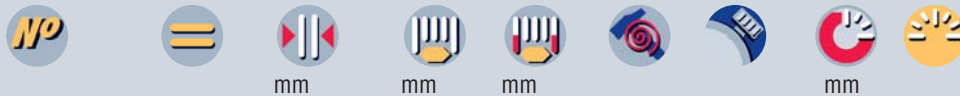
		5 mm	±0,08 mm
	Deviation span	12 µm	4 µm
	Total deviation span	14 µm	4 µm
	Repeatability limit	2 µm	1 µm
	Max. hysteresis	2 µm	1 µm
	Measuring force	Standard line	Standard line IP54
		≤ 1,5 N	≤ 1,7 N



TESA YE and COMPAC Dial Gauges – Standard 58 mm dial diameter, 0,001 mm reading



- ✓
- EN ISO 463
Factory standard
- 0,001 mm
- 1,5 mm
- Rotating dial
- Full-metal case housing.
Fixing shank and plunger in hardened stainless steel.
- Adjustable tolerance markers
Measuring insert with M2,5 thread.
- 3 mm dia. ball tip, already mounted.
- Cardboard box
- Identification number
- Inspection report with a declaration of conformity



Standard line

Model	Reading	Span	Span	Span	Span	Span	Span
01412611	0,001	5	5,3	●	–	0,2	0 ÷ 100 ÷ 200
556	0,001	5	5,3	●	–	0,2	0 ÷ 10 ÷ 20
01412511	0,001	1	1,5	●	–	0,1	0 ÷ 50 ÷ 100
567	0,001	1	3,3	●	–	0,1	0 ÷ 5 ÷ 10

Standard line IP54 protected against the penetration of liquids

556E	0,001	5	5,3	●	–	0,2	0 ÷ 10 ÷ 20
01412711	0,001	1	1,5	●	–	0,1	0 ÷ 50 ÷ 100
567E	0,001	1	3,3	●	–	0,1	0 ÷ 5 ÷ 10

Standard line with restricted reading range

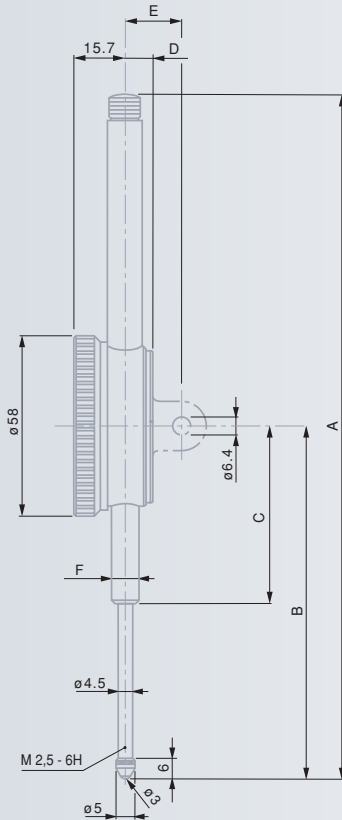
567S	0,001	±0,04	3,3	●	–	0,1	4 ÷ 0 ÷ 4
------	-------	-------	-----	---	---	-----	-----------

Permissible limits of a metrological characteristic (MPE/MPL)

	Deviation span	12 µm	4 µm	4 µm
	Total deviation span	14 µm	5 µm	4 µm
	Repeatability limit	2 µm	1 µm	1 µm
	Max. hysteresis	2 µm	1 µm	1 µm
	Measuring force	Standard line	Standard line	Standard line
		≤ 1,5 N	≤ 1,5 N	≤ 1,5 N
	Standard line IP54	≤ 1,7 N	≤ 1,7 N	

**TESA YE, MERCER and COMPAC
Dial Gauges – Standard**

**58 mm dial diameter, 0,01 mm reading,
long range**



mm	30 mm	50 mm	100 mm
A	148	228	390
B	88	117,2	211,6
C	50	60	103,6
D	10	9	9
E	20	19	19
F	Ø 8h6	Ø 8h6	Ø 8h6



EN ISO 463
Factory
standard



0,01 mm



1,5 mm



Rotating dial



Full-metal
case housing.
Fixing shank
and plunger in hardened
stainless steel.



Adjustable
tolerance markers
Measuring insert
with M2,5 thread.



3 mm dia.
ball tip, already
mounted.



Cardboard box



Identification
number



Inspection report
with a declaration
of conformity



mm



mm



mm



mm



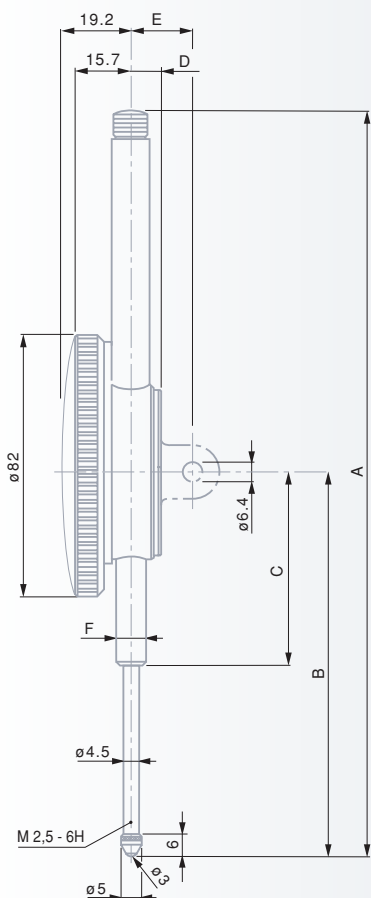
Standard line with long range

01412012		0,01	30	30,5	●	–	1	0 ÷ 50 ÷ 100
01416039	252-1	0,01	30	30,5	●	●	1	0 ÷ 50 ÷ 100
712		0,01	30	30,5	●	–	1	0 ÷ 50 ÷ 100
01412013		0,01	50	50,5	●	–	1	0 ÷ 50 ÷ 100
722		0,01	50	50,5	●	–	1	0 ÷ 50 ÷ 100
732		0,01	100	100,5	●	–	1	0 ÷ 50 ÷ 100

Permissible limits of a metrological characteristic (MPE/MPL)

	30 mm	50 mm	100 mm
	20 µm	25 µm	30 µm
	25 µm	30 µm	35 µm
	3 µm	3 µm	3 µm
	5 µm	5 µm	8 µm
	≤2,2 N	≤2,5 N	≤3,2 N

TESA YE and COMPAC Dial Gauges – Standard 82 mm dial diameter, 0,01 mm reading, long range



mm	10 mm	30 mm	50 mm	100 mm	200 mm
A	121	158	228	390	752
B	78	98	117,2	211,6	437
C	60	60	60	103,6	150
D	9	10	9	9	10,4
E	19	20	19	19	20,2
F	Ø 8h6	Ø 8h6	Ø 8h6	Ø 8h6	Ø 12



✓



EN ISO 463
Factory
standard



0,01 mm



2,3 mm



Rotating dial



Full-metal
case housing.
Fixing shank
and plunger in hardened
stainless steel



Measuring insert
with a M2,5 thread



3 mm dia.
ball tip, already
mounted.



Cardboard box



Identification
number



Inspection report
with a declaration
of conformity



mm



mm



mm



mm



Standard line with long range

01412311	0,01	10	10,5	–	–	1	0 ÷ 50 ÷ 100
712G	0,01	30	30,5	●	–	1	0 ÷ 50 ÷ 100
722G	0,01	50	50,5	●	–	1	0 ÷ 50 ÷ 100
01412014	0,01	100	100,5	●	–	1	0 ÷ 50 ÷ 100
732G	0,01	100	100,5	●	–	1	0 ÷ 50 ÷ 100
732GB	0,01	100	100,5	●	●	1	0 ÷ 50 ÷ 100
752G	0,01	200	200,5	●	–	1	0 ÷ 50 ÷ 100

Permissible limits of a metrological characteristic (MPE/MPL)

	10 mm	30 mm	50 mm	100 mm	200 mm
Deviation span	15 µm	20 µm	25 µm	30 µm	45 µm
Total deviation span	17 µm	25 µm	30 µm	35 µm	50 µm
Repeatability limit	3 µm	3 µm	3 µm	3 µm	3 µm
Max. hysteresis	3 µm	5 µm	5 µm	8 µm	10 µm
Measuring force	≤ 1,4 N	≤ 2,2 N	≤ 2,5 N	≤ 3,2 N	≤ 4 N

COMPAC Dial Gauge – Standard
82 mm dial diameter, 0,001 mm reading



EN ISO 463
 Factory
 standard

0,001 mm

2,2 mm

Rotating dial

Full-metal
 case housing.
 Fixing shank
 and plunger in hardened
 stainless steel

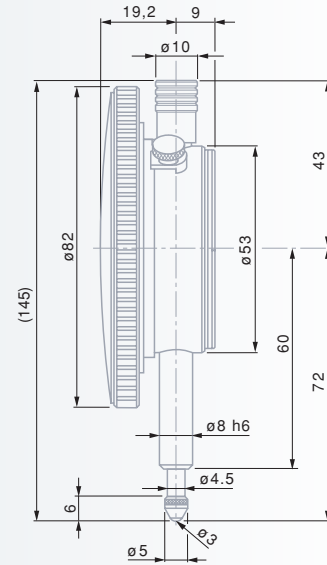
Measuring insert
 with a M2,5 thread

3 mm dia.
 ball tip, already
 mounted.

Cardboard box

Identification
 number

Inspection report
 with a declaration
 of conformity



mm



mm



mm



mm



Standard line

556G

0,001

5

5,3

●

–

0,2

0 ÷ 10 ÷ 20

Permissible limits of a metrological characteristic (MPE/MPL)

	5 mm
	12 µm
	14 µm
	2 µm
	2 µm
	≤ 1,5 N