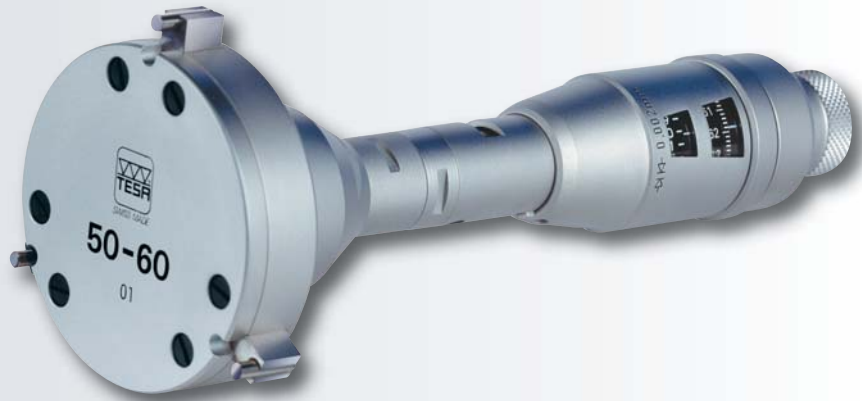


TESA TRI-O-BOR

Self-centring and self-aligning internal micrometers with 3-line contact with the part being inspected. These micrometers measure trough holes, blind bores and short centring shoulders.



DIN 863 T4
(Style C2)
NF E 11-099

0,002 mm
or 0.0002 in

0,01 mm
or 0.001 in

Tungsten carbide
tipped measuring
bolts and cone

Supplied
with 1 heat
insulating
sleeve (No. 00940020),
2 keys (No. 00940001),
1 screwdriver
(No. 00862801)

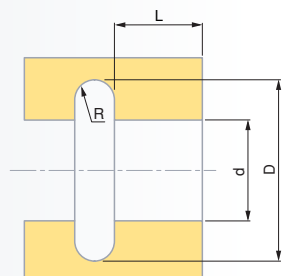
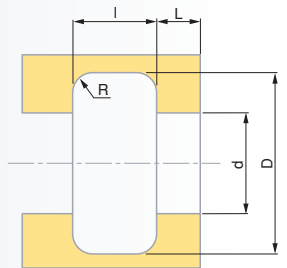
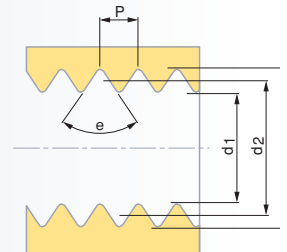
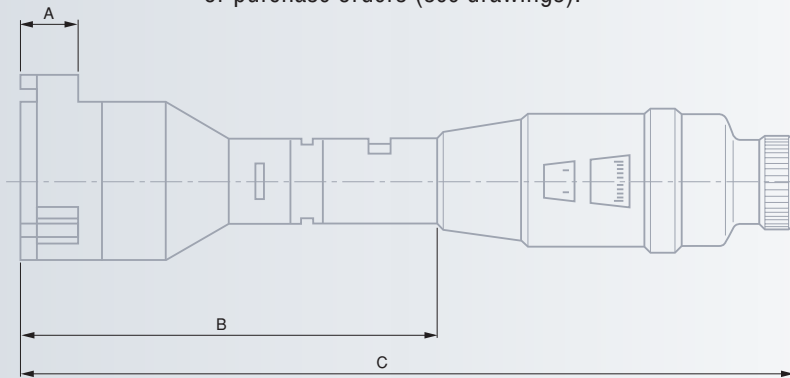
Shipping box

Identification
number

Inspection report
with a declaration
of conformity

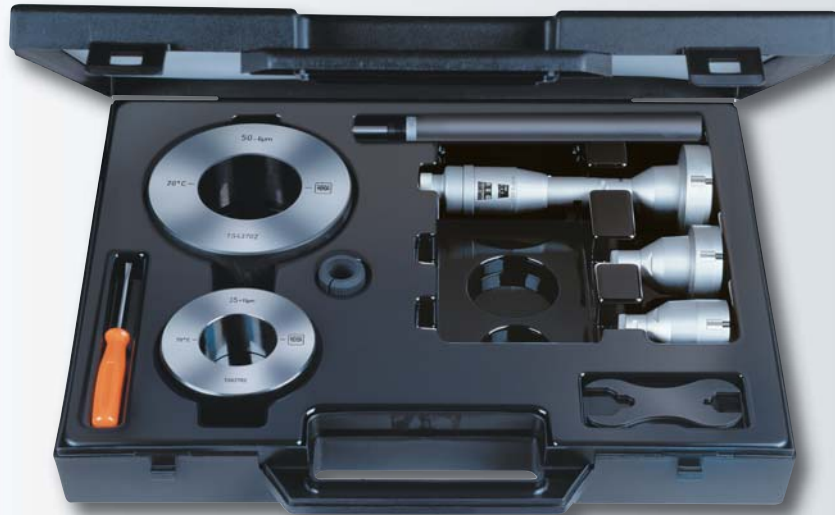
Measuring Bolts with Special Design

Used for ISO metric threads (M16 x 0,5 to M150 x 6), UN, UNC or UNF unified imperial threads (60°) and Whitworth threads (55°). Measuring bolts with special profiles can also be made available. Both the size and type of the thread or the workpiece to be measured must be specified in your inquiries or purchase orders (see drawings).



TESA	mm	B&S	in	µm	µm	A mm	B mm	C mm
00910005	15 ÷ 20	00982000	0.60 ÷ 0.80	4	4	6	≥ 66	≤ 132
00910006	20 ÷ 25	00982001	0.80 ÷ 1.0	4	4	6	≥ 66	≤ 132
00910007	25 ÷ 30	00982002	1.0 ÷ 1.2	4	4	6	≥ 66	≤ 132
00910405	30 ÷ 40	00982003	1.2 ÷ 1.6	4	4	10	≥ 70	≤ 138
00910406	40 ÷ 50	00982004	1.6 ÷ 2.0	4	4	10	≥ 70	≤ 138
00910407	50 ÷ 60	00982005	2.0 ÷ 2.4	5	5	10	≥ 70	≤ 138
00910705	60 ÷ 70	00982006	2.4 ÷ 2.8	5	5	18	≥ 78	≤ 147
00910706	70 ÷ 80	00982007	2.8 ÷ 3.2	5	5	18	≥ 78	≤ 147
00910707	80 ÷ 90	00982008	3.2 ÷ 3.6	5	5	18	≥ 78	≤ 147
00911105	90 ÷ 100	00982009	3.6 ÷ 4.0	5	5	18	≥ 78	≤ 147
00911106	100 ÷ 110	00982010	4.0 ÷ 4.4	6	6	18	≥ 78	≤ 147
00911107	110 ÷ 120	00982011	4.4 ÷ 4.8	6	6	18	≥ 78	≤ 147

TESA TRI-O-BOR Partial Sets



For technical data, see on previous page.
For setting rings, report to page C-24.



Supplied with 1 extension for depth increase (150 mm) No. 00940000, 1 heat insulating sleeve No. 00940020, 2 keys No. 00940001, 1 screwdriver No. 00862801



Protective case or carrying case



Inspection report with a declaration of conformity

Metric Executions

TESA	mm							mm	
Partial sets including		Measuring element	Measuring heads, complete					Setting rings	
00910302	15 ÷ 30	00910201	00910101 00910102 00910103	15 ÷ 20 20 ÷ 25 25 ÷ 30				00840104 00840106	15 25
00910602	30 ÷ 60	00910201	00910501 00910502 00910503	30 ÷ 40 40 ÷ 50 50 ÷ 60				00840107 00840108	35 50
Partial sets including		Measuring element	Measuring heads		Measuring bolts			Setting rings	
00910902	60 ÷ 90	00910802	00910801	60 ÷ 90	00911001 00911002 00911003	60 ÷ 70 70 ÷ 80 80 ÷ 90		00840109 00840110	70 90
00911302	90 ÷ 120	00910802	00911201	90 ÷ 120	00911401 00911402 00911403	90 ÷ 100 100 ÷ 110 110 ÷ 120		00840110 00840111	90 110

Inch Executions

B&S	in							in	
Partial sets including		Measuring element	Measuring heads, complete		Measuring bolts			Setting rings	
00980301	0.60 ÷ 1.2	00980200	00980101 00980102 00980103	0.60 ÷ 0.80 0.60 ÷ 1.0 1.0 ÷ 1.2				00850104 00850106	0.60 1.0
00980601	1.2 ÷ 2.4	00980200	00980501 00980502 00980503	1.2 ÷ 1.6 1.6 ÷ 2.0 2.0 ÷ 2.4				00850107 00850108	1.4 2.0
00980901	2.4 ÷ 3.6	00980800	00980801	2.4 ÷ 3.6	00931001 00931002 00931003	2.4 ÷ 2.8 2.8 ÷ 3.2 3.2 ÷ 3.6		00850109 00850110	2.8 3.6
00981301	3.6 ÷ 4.8	00980800	00981201	3.6 ÷ 4.8	00931401 00931402 00931403	3.6 ÷ 4.0 4.0 ÷ 4.4 4.4 ÷ 4.8		00850110 00850111	3.6 4.4

TESA TRI-O-BOR Full Sets



For technical data, see on previous page.

For setting rings, report to page C-24.

Supplied with 1 extension for depth increase (150 mm) No. 00940000, 1 heat insulating sleeve No. 00940020, 2 keys No. 00940001, 1 screwdriver No. 00862801

Protective case or carrying case

Inspection report with a declaration of conformity



Metric Executions

No	mm	No	mm	No	mm	No	mm
Full sets including		Single micrometers		Setting rings		Extensions	
00910004	BSC 15 ÷ 30	00910005 15 ÷ 20 00910006 20 ÷ 25 00910007 25 ÷ 30		00840104 15 00840105 25		00940000 150	
00910404	BSD 30 ÷ 60	00910405 30 ÷ 40 00910406 40 ÷ 50 00910407 50 ÷ 60		00840107 35 00840108 50		00940000 150	
00910704	BSF 60 ÷ 90	00910705 60 ÷ 70 00910706 70 ÷ 80 00910707 80 ÷ 90		00840109 70 00840110 90		00940000 150	
00911104	BSG 90 ÷ 120	00911105 90 ÷ 100 00911106 100 ÷ 110 00911107 110 ÷ 120		00840110 90 00840111 110		00940000 150	

Inch Executions

No	in	No	in	No	in	No	in
Full sets including		Single micrometers		Setting rings		Extensions	
00980000	BSCE 0.60 ÷ 1.2	00982000 0.60 ÷ 0.80 00982001 0.80 ÷ 1.0 00982002 1.0 ÷ 1.2		00850104 0.60 00850106 1.0		00940000 4	
00980400	BSDE 1.2 ÷ 2.4	00982003 1.2 ÷ 1.6 00982004 1.6 ÷ 2.0 00982005 2.0 ÷ 2.4		00850107 1.4 00850108 2.0		00940000 4	
00980700	BSFE 2.4 ÷ 3.6	00982006 2.4 ÷ 2.8 00982007 2.8 ÷ 3.2 00982008 3.2 ÷ 3.6		00850109 2.8 00850110 3.6		00940000 4	
00981100	BSGE 3.6 ÷ 4.8	00982009 3.6 ÷ 4.0 00982010 4.0 ÷ 4.4 00982011 4.4 ÷ 4.8		00850110 3.6 00850111 4.4		00940000 4	

TESA TRI-O-BOR Accessories






Extension for Depth Increase



	
00940000	150

Protective Cases or Plastic Carrying Cases for TESA TRI-O-BOR



				
Single micrometers	Partial sets	Full sets	mm	in
00960023	00960024	00960024	15 ÷ 30	0.6 ÷ 1.2
00960025	00960026	00960026	30 ÷ 60	1.2 ÷ 2.4
00960027	00960028	00960028	60 ÷ 90	2.4 ÷ 3.6
00960004	00960004	00960008	90 ÷ 120	3.6 ÷ 4.8