



Factory standard

Bolts spaced 120° apart. The three measuring bolts are retracted for easy entry into the bore to be checked.

Measuring bolts for application range 6 to 10 mm made from steel, hardened to HV30 550. 10 to 100 mm with tungsten carbide coating, hardness to HV5 1300. Aluminium coated bore gauge body

Application range 6 to 50 mm = 4 µm
50 to 100 mm = 5 µm.

Both given values are valid for the bore gauge alone, without value sensor.

For additional setting rings, refer to page C-24

Models 40 mm up to 100 mm are provided with an extension rod for the measuring bolt L = 10 mm

Wooden case with a free space for a 60 mm dia. dial gauge

Identification number

Declaration of conformity



Each set includes 1 partial set, complete plus 1 TESA DIGICO 11, 12,5 mm (No. 01930104)

ROCH ALESOTEST

Self-aligning and self-centring electronic bore gauges with 3-line contact – All ROCH ALESOTEST are designed for measuring not only blind bores, but also through bores as well as short centring shoulders, except for the models covering the application range 6 to 10 mm.

- Robustly built, these tools are ideally suited for part series inspection on the production floor.
- Used in conjunction with a value sensor (must be ordered separately). The sensor can either be a dial gauge, whether mechanical or electronic, or any axial probe.



Partial Sets

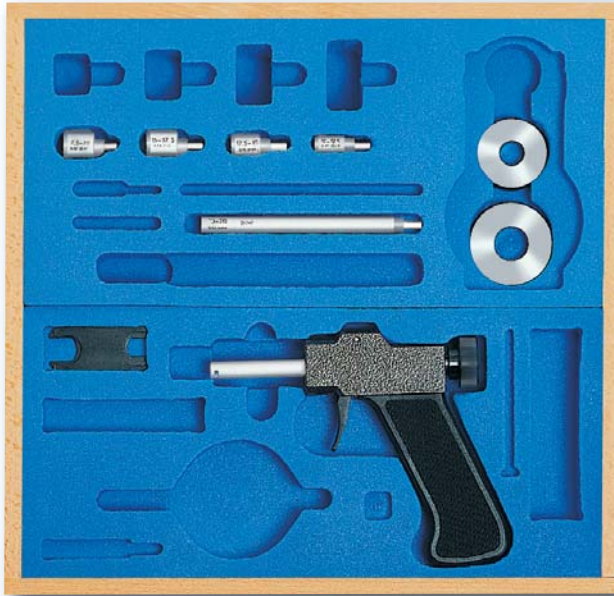
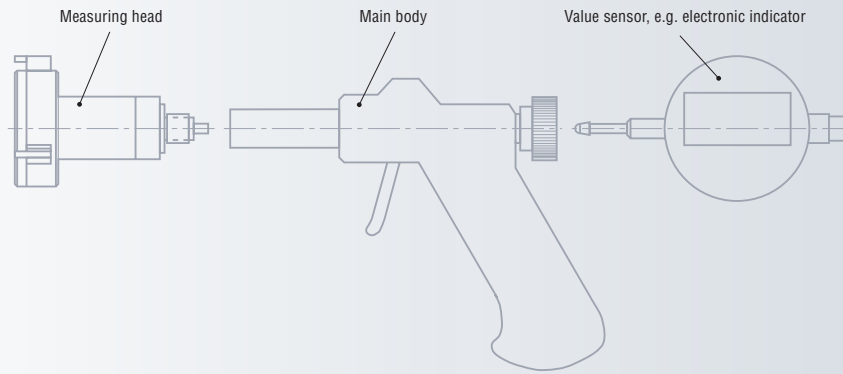
| No | mm | No | mm | No | No | mm | No | mm | |
|------------------------|-----------------|------------|---------------|------------|------------|------|------------|-----|------|
| Partial sets including | Measuring heads | Gauge body | Setting rings | Extensions | | | | | |
| 0081764703 | 6 ÷ 10 | 0081720351 | 6 ÷ 8 | 0081764653 | 0211625101 | 8 | 0081625081 | 100 | |
| | | 0081720353 | 8 ÷ 10 | | | | | | |
| 0081764706 | 10 ÷ 20 | 0081720356 | 10 ÷ 12,5 | 0081764655 | 0211625102 | 12,5 | 0081625082 | 100 | |
| | | 0081720358 | 12,5 ÷ 15 | | 0211625103 | | | | 17,5 |
| | | 0081720360 | 15 ÷ 17,5 | | | | | | |
| | | 0081720362 | 17,5 ÷ 20 | | | | | | |
| 0081764708 | 20 ÷ 40 | 0081720364 | 20 ÷ 25 | 0081764657 | 0211625104 | 25 | 0081625083 | 150 | |
| | | 0081720366 | 25 ÷ 30 | | 0211625105 | | | | 35 |
| | | 0081720368 | 30 ÷ 35 | | | | | | |
| | | 0081720370 | 35 ÷ 40 | | | | | | |
| 0081764710 | 40 ÷ 70 | 0081720372 | 40 ÷ 50 | 0081764659 | 0211625106 | 45 | 0081625084 | 150 | |
| | | 0081720374 | 50 ÷ 60 | | 0211625107 | | | | 60 |
| | | 0081720376 | 60 ÷ 70 | | | | | | |
| 0081764712 | 70 ÷ 100 | 0081720378 | 70 ÷ 85 | 0081764661 | 0211625108 | 75 | 0081625084 | 150 | |
| | | 0081720380 | 85 ÷ 100 | | 0211625110 | | | | 90 |

Full partial sets along with one DIGICO 11 electronic indicator, 12,5 mm



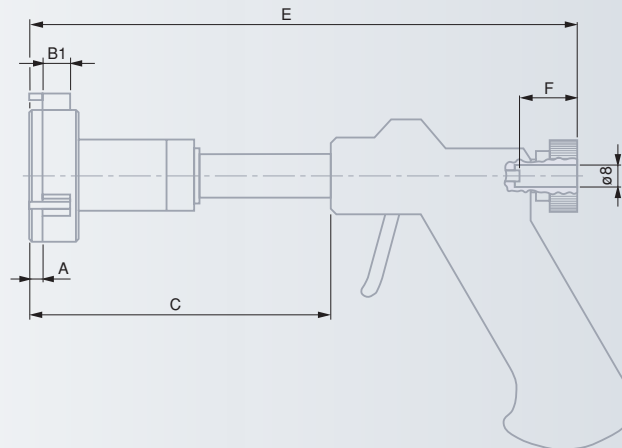
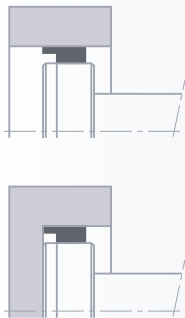
| | |
|----------|----------|
| 06230080 | 6 ÷ 10 |
| 06230081 | 10 ÷ 20 |
| 06230082 | 20 ÷ 40 |
| 06230083 | 40 ÷ 70 |
| 06230084 | 70 ÷ 100 |





Suited Cases for Partial Sets

| No | mm |
|------------|----------|
| | |
| 0081669522 | 10 ÷ 20 |
| 0081669523 | 20 ÷ 40 |
| 0081669524 | 40 ÷ 70 |
| 0081669525 | 70 ÷ 100 |



| mm | A mm* | B mm | C mm | E mm | F mm |
|----------|-------|------|-------|-------|------|
| 6 ÷ 10 | 1,2 | 3 | 54,5 | 144,4 | 18,4 |
| 10 ÷ 15 | 0,3 | 6,5 | 64,5 | 154,5 | 18,4 |
| 15 ÷ 20 | 0,3 | 6,8 | 64,5 | 154,5 | 18,4 |
| 20 ÷ 40 | 0,3 | 8,5 | 70 | 160 | 28,4 |
| 40 ÷ 70 | 0,3 | 14,5 | 103,7 | 198,7 | 29,4 |
| 70 ÷ 100 | 0,3 | 14,5 | 134,7 | 216,7 | 28,3 |

* Non-applicable for models from 10 mm since the measuring bolts are close to the front face of the bore gauge.