

# MICROMASTER

## with 7 Pairs of Interchangeable Measuring Inserts

Non-rotating spindle – Without spindle lock.

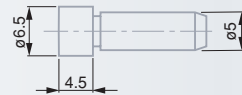


No	mm	in
06030045	0 ÷ 30	0 ÷ 1.2
06030046	25 ÷ 55	1.0 ÷ 2.1

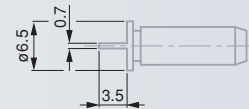
-  ✓
-  0,001 mm  
0.00005 in
-  Metric/Inch conversion
-  Micrometer element with a max. perm. error of 4 µm
-  7,5 mm dia., non-rotating spindle.
- With a fixing bore for a measuring insert.
- Adjustable attachment on anvil for a measuring insert, with lock.
-  Hardened steel
-  Max. 10 N
-  RS 232
-  Other technical data on page B-3
-  Plastic case
-  Identification number
-  Inspection report with a declaration of conformity

### Components of the Full Micrometers

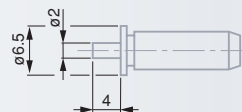
No	mm	in
<i>Single Micrometers</i>		
06030099	0 ÷ 30	0 ÷ 1.2
06030100	25 ÷ 55	1.0 ÷ 2.1
<i>Full set of measuring inserts</i>		
<b>00269027</b>		
<i>Includes one pair of the following inserts</i>		
No	mm	
00269020	flat	Ø 6,5
00269021	small, flat	Ø 2
00269022	spherical	R = 5
00269023	large, flat	Ø 12
00269024	narrow, flat	0,7
00269025	cone-shaped	Ø 0,3/60°
00269026	knife-edged	0,3/60°
Specially designed measuring faces also available upon request.		



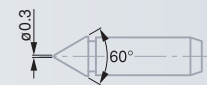
00269020



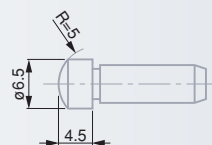
00269024



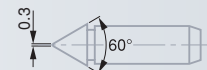
00269021



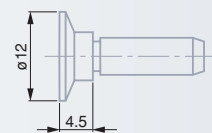
00269025



00269022



00269026



00269023

# ETALON Basic with 7 Pairs of Interchangeable Inserts



0,01 mm

0,5 mm

Micrometer element with max. perm. error of 4 μm

8,0 mm dia., non-rotating spindle.

With a fixing bore for the measuring insert. Adjustable attachment on anvil for the insert, also with lock.

Without spindle lock

Max. 10 N

Plastic case

Identification number

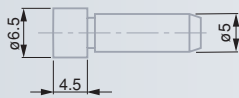
Inspection report with a declaration of conformity



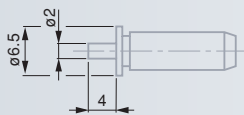
mm

00219056	0 ÷ 25
00219058	25 ÷ 50
00219060	50 ÷ 75
00219062	75 ÷ 100

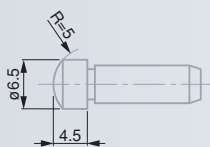
## Components of the Full Micrometers



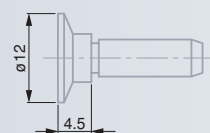
00269020



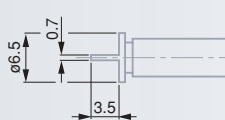
00269021



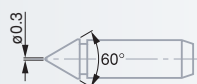
00269022



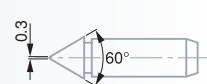
00269023



00269024



00269025



00269026



mm

Single micrometers

00219057	0 ÷ 25
00219059	25 ÷ 50
00219061	50 ÷ 75
00219063	75 ÷ 100

Full set of measuring inserts

00269027

Includes one pair of the following inserts



mm

μm

00269020	flat	Ø 6,5	0,6
00269021	small, flat	Ø 2	0,6
00269022	spherical	R = 5	
00269023	large, flat	Ø 12	1,2
00269024	narrow, flat	0,7	
00269025	cone-shaped	Ø 0,3 / 60°	
00269026	knife-edged	0,3 / 60°	